



**GOVERNMENT
OUTCOMES
LAB**

Preventative Spending in Children's Social Care - Lessons from Norfolk's 100,000 Care Days Avoided

*Engaging with Evidence Session 16
9 May 2023*



@golaboxford
#EngagingwithEvidence



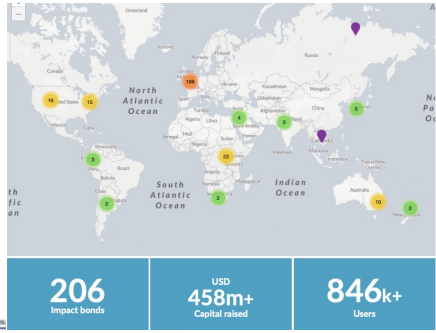
golab.ox.ac.uk

The Government Outcomes Lab (GO Lab)



Department for Culture Media & Sport

Public Money & Management



GOV.UK

Coronavirus (COVID-19) | Guidance and support

Research and analysis
Evaluation Strategy for the Life Chances Fund

Overview of the evaluation approach that supports learn around a series of Social Impact Bonds funded via the Life Chances Fund.



Established in 2016

Partnership between UK Government & University of Oxford

Walking the contractual tightrope: a transaction cost economics perspective on social impact bonds

Clare FitzGerald, Eleanor Carter, Ruth Dixon & Mara Airolidi

To cite this article: Clare FitzGerald, Eleanor Carter, Ruth Dixon & Mara Airolidi (2019) Walking the contractual tightrope: a transaction cost economics perspective on social impact bonds, Public Money & Management, 39:7, 468-487, DOI: 10.1080/09540962.2019.1583889

To link to this article: <https://doi.org/10.1080/09540962.2019.1583889>



We investigate government's role in unlocking fruitful cross-sector partnerships to improve social outcomes

Welcome to the fifteenth session of the Engaging with Evidence series

An open platform for policymakers, practitioners and researchers around the world to engage with key findings from the latest research and evaluation work in the field

- Distillation of key research findings
- Practical insights from practitioners across different sectors and fields
- Honest and constructive dialogue

For the next edition of Engaging with Evidence

Insights and Lessons from MHEP LCF Evaluation's First Interim Report

17 May 2023. 1.30 - 3.00 pm BST



Engaging with
Evidence
Webinar series

Engaging with
Evidence
Webinar series

Preventative Spending in Children's
Social Care - Lessons from Norfolk's
100,000 Care Days Avoided

In today's session:

Part I - Presenting the Stronger Families Norfolk & key learnings

Part II - Panel discussion on exploring the applicability of the insights and key lessons on the wider children social care sector

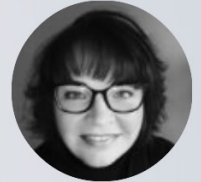
Speakers



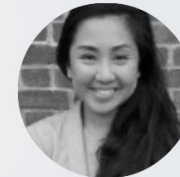
Dr Tom Jefford
Family Psychology
Mutual



Josh MacAlister
Early Intervention
Foundation and What Works
for Children's Social Care



Sarah Cubitt
Norfolk County
Council



Claudia Cheung
Bridges Outcomes
Partnerships



Kate Dexter
Norfolk's Children's
Services

Chair



Nigel Ball
GO Lab



**GOVERNMENT
OUTCOMES
LAB**

Our audience this morning



@golaboxford
#EngagingwithEvidence



golab.ox.ac.uk

**Engaging with
Evidence**
Webinar series



Part I - Presenting the Stronger Families Norfolk & key learnings

Dr Tom Jefford, Family Psychology Mutual Community Interest
Company

Claudia Cheung, Bridges Outcomes Partnerships

Stronger Families Partnership



Context: NCC wanted to bring collaboration and innovation to their support to families from Children's Services

Initial programme

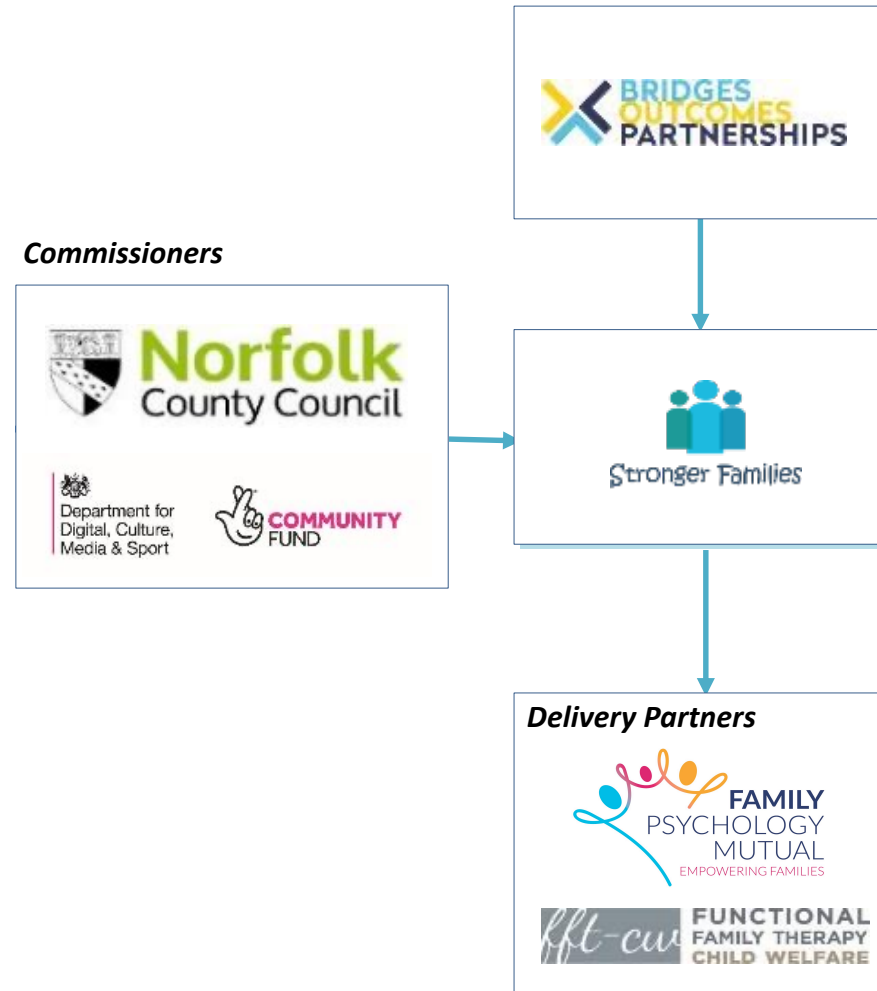
- Support **demand management** and **prevention strategy** to enable children services to be **financially sustainable**
- Address challenge of stays in care being longer for children **over 8-years old**.
- Operate on a **collaborative** basis, in partnership with the provider, the investor, our in-house operational teams, and other partner agencies on the ground
- Bring in **innovation** without prescribing a specific model of intervention.

Extension

- Address **sufficiency** challenges, **financial pressures** and **gaps in clinical services**



Family Psychology Mutual and Bridges Outcomes Partnership builds on existing experience to explore this opportunity with Norfolk



Via collaborative design and accountability, as a partnership we have delivered evidenced outcomes and impact of supporting families together



179

Families completed/on track to complete Functional Family Therapy/Child-Welfare Adaptation

92%

Young people who have engaged with the service have remained within their family homes and their families



Spending

123,677

Days with their families (days out of care)



~£12m

Adjusted cost avoided



70%

n=84

Parent/carers reported improved family functioning (Score-15)

67%

n=69

Parent/carers reported lower psychological distress (OQ 45.2)

74%

n=118

Cases have stepped down in social care status post-intervention completion



With outcomes around families staying together, we continuously improved to provide this service to as many families in the best way possible. Examples are:

Local Authority/County Council

- Co-ordination and collaboration with other services
- Governance of using live data to improve service
- Adapting referral criteria to work with younger age groups (6+)

Communities of families/systems around families

- Bigger therapeutic team to reach all families
- Additional co-ordination and managerial role
- Additional clinical supervision support

Family and the therapy

- Whole-family systemic strengths-based intervention
- Personalisation family funds
- Parental psychology resources



What next for NCC?

- Value of multi-disciplinary approach
- Invest to save
- Social Care Review and Family Help

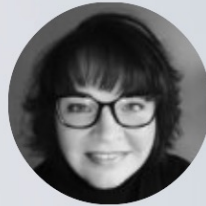
Panel Discussion



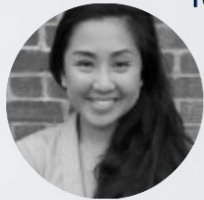
Dr Tom Jefford
Family Psychology
Mutual



Josh MacAlister
Early Intervention
Foundation and What Works
for Children's Social Care



Sarah Cubitt
Norfolk County
Council



Claudia Cheung
Bridges Outcomes
Partnerships



Kate Dexter
Norfolk's Children's
Services

Part II - Panel discussion on exploring the applicability of the insights and key lessons on the wider children social care sector

**Engaging with
Evidence**
Webinar series

Stay tuned for upcoming sessions...



**GOVERNMENT
OUTCOMES
LAB**



Sign up to our monthly newsletter



For the next edition of Engaging with Evidence

**Insights and Lessons from MHEP LCF
Evaluation's First Interim Report**

17 May 2023. 1.30 - 3 pm BST



**Engaging with
Evidence**
Webinar series

#EngagingwithEvidence

Social Outcomes Conference 2023

- Join us on 14-15th Sep at the Blavatnik School of Government in Oxford or online
- The annual convening of the world's leading scholars, policymakers and practitioners working to improve social outcomes
- Find out more: golab.bsg.ox.ac.uk

